



# ARTalk

A publication of the Simi Valley Art Association

OCTOBER 2020

## Greetings from the SVAA BOARD



*Dear Members,*

*Here it is, now October, and there is still no change in the news about lifting restrictions for social gatherings. As many of you would agree, even when restrictions are lifted, it will be difficult for everything to get back to normal... including events with our Association. We have made some progress however in keeping our Association involved. Our Board is open to any suggestions and thoughts you may have. So please don't hesitate to contact any of us.*

*We continue to receive outstanding artwork, submitted for our newsletters. Thanks to those who have participated and I hope other members will join. It is refreshing to see other member's recent work. I have received feedback from several members that they are enjoying this.*

*During the next few weeks, we will be sending letters to the Simi Valley Unified School District high school principals, informing them that we will be donating funds to them for their art programs as part of our annual grant program. This year, as agreed upon by our board members, we will be donating an additional \$250 for a total of \$750 to each high school. Thanks to you, we are able to give this generous contribution to our local high schools.*

*Finally, member David Sgambellone, completed our sponsor sign for the Simi Valley Welcome Corner Project. David has done a beautiful sign for us and soon it will be mounted at the Welcome Corner. So, make sure to look for it. Thank you, David, for your time and effort with this project.*

*I wish you all good health and stay safe!*

*Tom*

### EXECUTIVE BOARD SECTION

*President*

**Tom Evans**  
805-558-5809  
tom@rsrpd.us

*Vice President*

**Donna Snyder**  
805-527-6797

*Recording Secretary*

**Carmen Lamp**  
805-233-1800  
carmenlamp29@gmail

*Treasurer*

**Terry Walson**  
805-526-9688  
trwalson@hotmail.com

*Corresponding Secretary*

**Helle Urban**

*Newsletter Designer*

**Boi Sibug**

*Newsletter Coordinator*

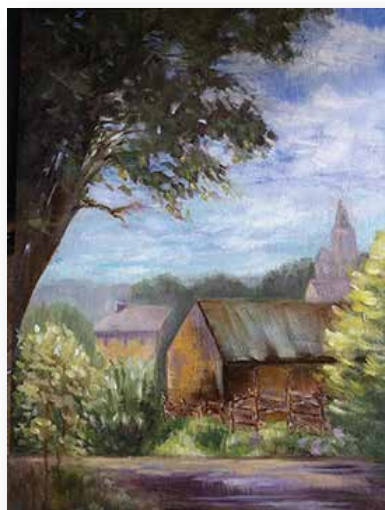
**Victoria Marble**  
805-990-6606  
victoriamarble2015@gmail.com

*Email & Newsletter Submissions*

info@simivalleyart.org

We would like to now take the time to acknowledge our local artists who have continued to persevere and create through these trying times. We face these new challenges together, and we recognize art as the universal language which illustrates this facet of the human experience. If you have art you would like to share for next month's issue, please don't hesitate to contact Tom or any of our Board Members.

## Artists Quarantine Works



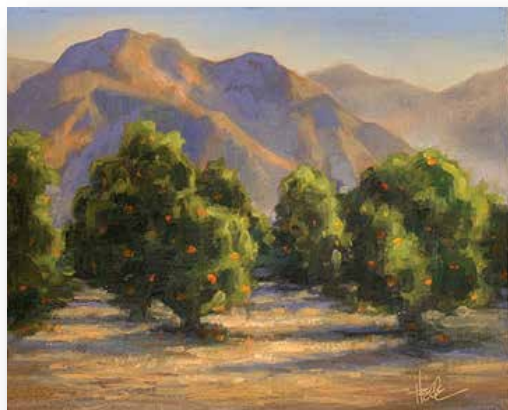
**Donna Snyder**  
14" x 11", oil



**Donna Snyder**  
8" x 10", oil



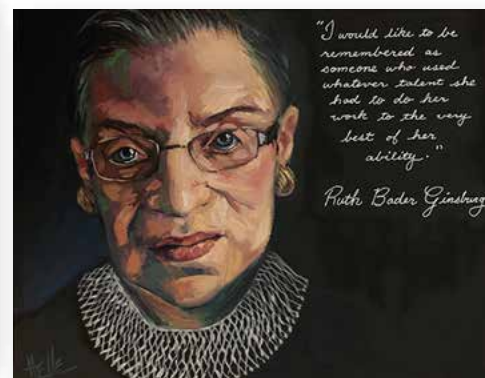
**Helle Urban**  
"19th Amendment Ratified - 100th Anniversary"  
12" x 18", oil on canvas.



**Helle Urban**  
"Orange orchard in Ojai"  
10" x 8" oil on linen



**Helle Urban**  
"Morning shadows in Ojai"  
10" x 8"  
oil on linen



**Helle Urban**  
"Ruth Bader Ginsburg"  
14" x 11", oil on linen



**Rachel Whitmore**  
11" x 15"  
Watercolor and Pen on paper

### Sponsor Sign

The sponsor signs are a City of Simi Valley project for the Welcome Corner located at the Southeast corner of Madera and LA Avenue. The City invites non-profit organizations to pay a one time fee to the City to have your sponsor sign mounted at the corner. The City requires that the sign be designed to meet their standards and is reviewed by them before the sign can be manufactured. We submitted a design done by David earlier this year and the design was accepted by the City last month. David manufactured the sign and it is now ready to be delivered to the City and will be mounted sometime soon at the Welcome Corner. The City received a grant last year to make improvements to the Welcome Corner and they just recently completed those improvements. They included refurbishing existing sponsor signs, painting the rails and pilasters, adding landscape, and lighting for the signs.



• **SVAA Facebook:**

**Like us on Facebook.** Feel free to comment on our posts or “Share” posts from our Facebook Page timeline to your own timeline or your friends’. You can also Share our posts as a Facebook message. To visit our facebook <http://facebook.com/SVAAINC>.

\*\*\*Members interested in having photos of your artwork on facebook or website, please contact Terry Walson @trwalson@hotmail.com

# www.simivalleyart.org

Members who would like to add links to their personal website or upload some art works to our website, contact Terry Walson at [trwalson@hotmail.com](mailto:trwalson@hotmail.com)

**Message from our webmaster** Check out the new “SVAA Happenings” feature on the website home page: <http://www.simivalleyart.org/>. Here will be current news, with links to more complete information about the item. It is time to renew your SVAA membership. Forms and payment via PayPal are on the Membership page. Not yet a member? Join us now – the same form is used for new memberships as well as renewals.



## MEMBERSHIPS

**Membership information can be found online at our website: [www.simivalleyart.org](http://www.simivalleyart.org)**  
**\*\*Members: Please note that this is the time to renew your SVAA membership.**

**COMMITTEE MEMBERSHIP UPDATE:** Please sign up for the committees. Thanks to all who have signed up and please contact any Board member or Committee chairs for questions

**MORE MEMBERSHIP INFORMATION:**

Our fees are \$40.00 for yearly dues with \$20.00 for the second family member. Students at \$20.00 for the year with a \$3.00 demo fee unless, accompanied by a paying adult - then they get in for free. **Membership dues are non-refundable.** A donation of \$5.00 for members and \$7.00 for non-members is requested at the door for the monthly art demonstration and general meeting.

*Newsletter submissions must be made by the 20th of the month. Send your articles via email: [svaaprints@gmail.com](mailto:svaaprints@gmail.com). Place “Newsletter Submission” in the Subject line. Forwarded emails or emails without subject may not all be opened due to internet security reasons and spamming.*

**“Don’t think of introversion as something that needs to be cured... Spend your free time the way you like, not the way you THINK you’re supposed to.”**  
– Susan Cain

## Advertise in the SVAA Newsletter

**To Place a Newsletter Ad:**

Ads and payments must be received by the 20th of the month prior to the month you want your ad to appear. e.g. - October 20th for November newsletter.

Send a jpeg via email: 4” x 6”, 300 dpi, of your print-ready ad or business card to: [info@simivalleyart.org](mailto:info@simivalleyart.org). Place “Newsletter Submission” in the Subject Line.

| Per OneMonth              | Members | Non-Members |
|---------------------------|---------|-------------|
| Business Card 2” x 3-1/2” | \$10    | \$15        |
| 1/4 Page: 5” x 4”         | \$20.00 | \$25.00     |
| 1/2 Page: 5” x 8”         | \$35.00 | \$40.00     |